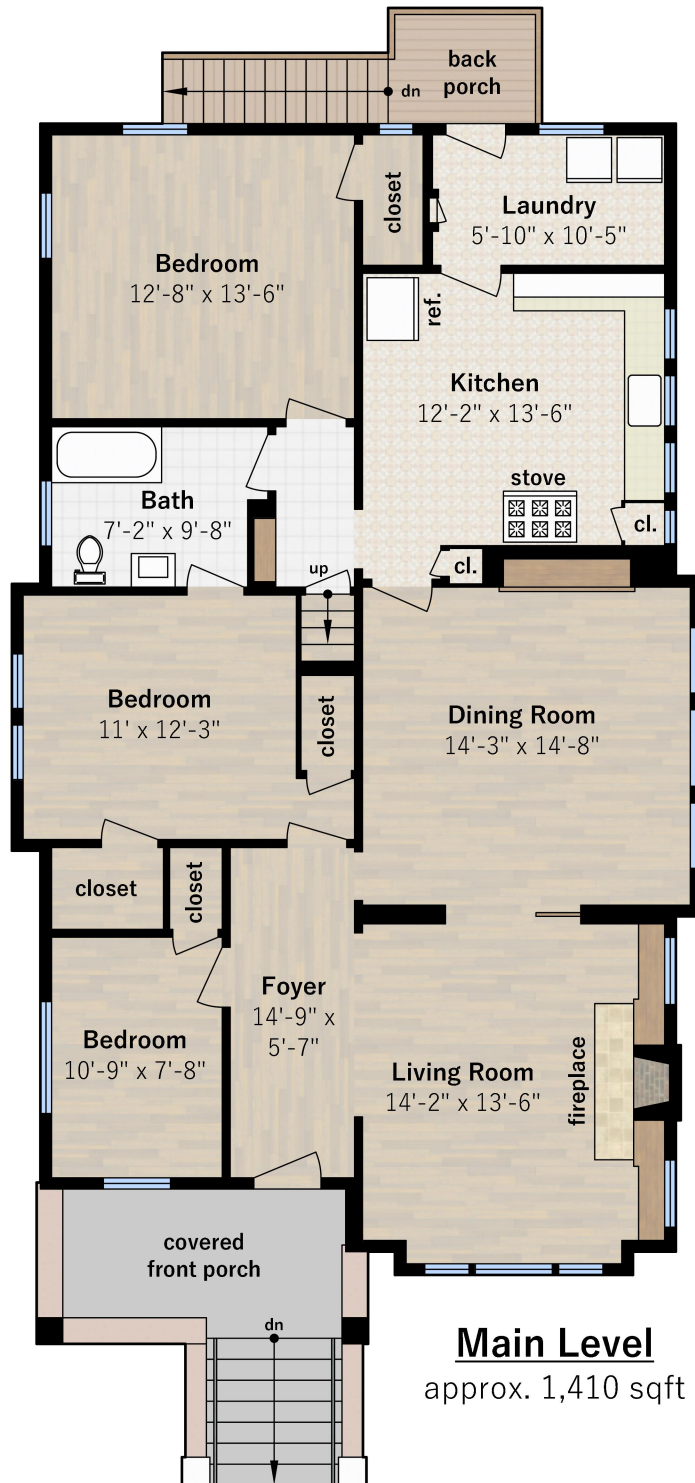


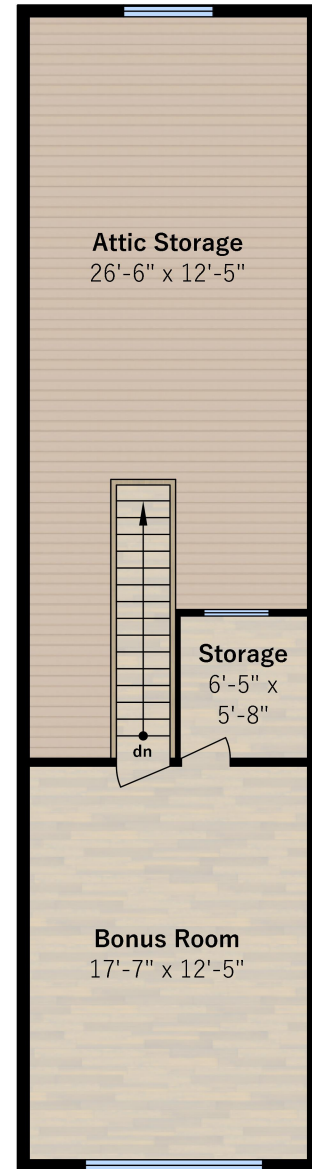


5587 Lawton Avenue

Oakland, CA 94618



Main Level
approx. 1,410 sqft



Upper Level
approx. 290 sqft
(+410 sqft Attic)

| | |
|--|--|
| Estimated Total Finished Square Footage: 1,410 sqft Main Level: 1,410 sqft | Estimated Total Unfinished Square Footage: 410 sqft Attic: 410 sqft |
| Estimated Total Additional Square Footage: 290 sqft Upper Level: 290 sqft | Major room interior dimensions are shown, and square footage is measured from perimeter of exterior walls. Patios are not included in calculations. Measured on August 14th, 2019 |

Any and all information on this drawing is for illustrative purposes only and is deemed reliable, but not guaranteed. All information requires independent verification.

Listed By: **Jackie Care**
Compass

Drawn by: Joe Barnes Design
www.joebarnesdesign.com